
TOGAF Certification

Web System Primer

Introduction

Andrew Josey
Director of Certification

The Web Certification system

- ❑ Built by The Open Group to automate certification
- ❑ It is a workflow system
- ❑ Guides applicants thru the process needed to register a product for certification
- ❑ Checks and validates input as you, the applicant, progress

Where it is...

<http://www.opengroup.org/togaf/cert/>

Note well...

- ❑ This is an introduction to the web certification system and should be read in conjunction with the specific additional primer presentation for the class of TOGAF Certification
- ❑ This is not an exhaustive walk through of the capabilities of the system but an overview
- ❑ You need to obtain an Open Group web account, (and for full capabilities) register your company and be accepted prior to being enabled to register products

Note well... (2)

- ❑ Links available on left navigation panel for
 - Obtaining a web id and password
 - Registering your company and its contacts
- ❑ Companies are required to have an appropriate TOGAF Commercial License

TOGAF Commercial Licensing

If you wish to use submit a product or service for certification to one of the following Product Standards a TOGAF Commercial License is required.

- TOGAF 7 Professional Services
- TOGAF 7 Tool Support
- TOGAF 7 Training
- TOGAF 8 Professional Services
- TOGAF 8 Tool Support
- TOGAF 8 Training

The type of commercial license required depends on the version of TOGAF, so for example TOGAF 7 Product Standards require a TOGAF 7 Commercial License, whereas the TOGAF 8 Product Standards require a TOGAF 8 Commercial License.

If your organization is a member of The Open Group's Architecture Forum it can obtain an Annual Commercial License for TOGAF for no additional charge after completing the additional appropriate paperwork for the license.

The TOGAF Commercial License Agreement is between your organization and The Open Group and requires signature. The TOGAF Commercial License agreement only needs to be entered into once per organization. It needs to be renewed annually. When it is in place multiple products or services can be submitted for certification to the above Product Standards.

TOGAF™ Certification - Mozilla Firefox

File Edit View Go Bookmarks Tools Help

https://www.opengroup.org/togaf/cert/

Tracking Systems Single UNIX Specifi... The Austin Commo... LWN

THE Open GROUP TOGAF™ Certification
Making standards work®

You are here: TOGAF™ Certification

Connected to SSL Server but NOT LOGGED IN

- Login [help]
- New user
- New Company Account (requires a valid user account)
- Forgotten Password?
- Help

TOGAF Certification

- Certification Register
- Register Search

Certification Documents

- Getting Started
- The Guide to TOGAF Certification
- TOGAF certification policy [PDF]
- TOGAF Certification Agreement
- Fee Schedule
- Frequently Asked Questions
- Product Standards
- Conformance Statement
- Questionnaires
- TOGAF Commercial Licensing

Welcome to the TOGAF Certification web site

News

TOGAF
Version 8 Enterprise Edition

TOGAF Certified by Examination is now available in selected locations (San Francisco, USA and Reading UK). Read [about the Examination](#), including what it comprises, where to take it and plans for further rollout. Try some [demonstration questions](#). The [Guide](#) has also been updated to include the process for taking the examination.

TOGAF Certification is for both individuals and organizations. Individuals can become certified by demonstrating their knowledge of TOGAF either by attending a training course or passing an examination test. Organizations can have their products (TOGAF Tools or Training Courses), and services certified. For more information see the [TOGAF Product Standards](#).

The following documents should be read and understood prior to certification, since you will be required to agree to them during that process:

- [The TOGAF Certification Policy \[PDF\]](#)
- [The TOGAF Certification Agreement](#)

The significant highlights of the certification process are outlined below:

1. The Certification Authority for this program is The Open Group, LLC.
2. A product, service or individual will be certified and entered on the certification register once the Certification Authority is satisfied that the product, service or individual meets the applicable Conformance Requirements and all other requirements, including formally agreeing to all the required terms, have been met.
3. A license to use the TOGAF certification logo in connection with the product, service or individual will be granted when certification is achieved.
4. All product information supplied to the Certification Authority will be treated as confidential as required by the

Done www.opengroup.org

Information

- ❑ All program documentation available from the front page including help and faqs
- ❑ Login information in the top left hand navigation bar
- ❑ All transactions are via the secure web server

Online Help

Help for New Users

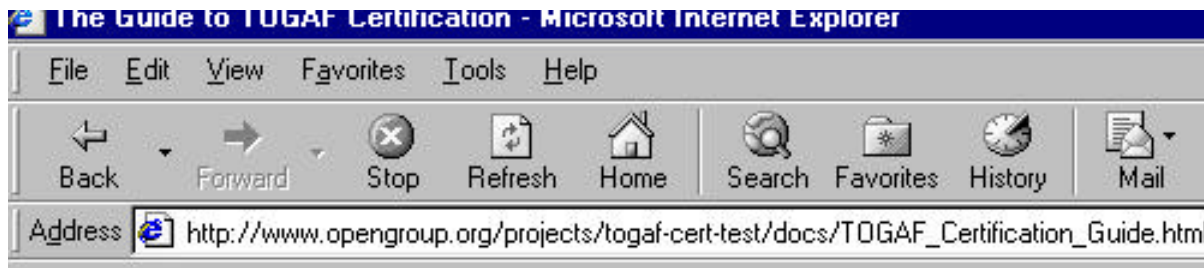
The available Product Standards for registration are dependent on your role are summarized below:

Your Role	Product Standards Available for Registration
(a) Individual not registered as a designated contact for a company accepted into the program	<ul style="list-style-type: none">• TOGAF 7 Certified (individual self-registration)• TOGAF 8 Certified (individual self-registration)
(b) Designated contact for a company accepted into the program	<ul style="list-style-type: none">• TOGAF 7 Certified (individual self-registration)• TOGAF 8 Certified (individual self-registration)• TOGAF 7 Professional Services• TOGAF 8 Professional Services• TOGAF 7 Tool Support• TOGAF 8 Tool Support• TOGAF 7 Training• TOGAF 8 Training
(c) Designated contact for a company accepted into the program with a TOGAF 7 Training Certified Product	<ul style="list-style-type: none">• As per (b) plus TOGAF 7 Certified (training provider batch registration)
(d) Designated contact for a company accepted into the program with a TOGAF 8 Training Certified Product	<ul style="list-style-type: none">• As per (b) plus TOGAF 8 Certified (training provider batch registration)

Individuals

As noted above, you can enter the system in a number of roles. The minimal role is as an individual not designated as a contact for a company accepted into the TOGAF certification program. For this you simply need a valid username and password on the Certification Authority's web server.

Online User Guide



The Guide to TOGAF Certification

Copyright © 2002,2003 The Open Group

Issue 0.94, December 16 2003

Table of Contents

1. [Introduction](#)
 - 1.1 [Referenced Specifications](#)
 - 1.2 [Summary of Certification Documents](#)
 - 1.3 [Summary of Web References](#)
2. [How to Achieve Certification](#)

Connecting to the Secure Site (1)

THE *Open* GROUP
Making standards work

You are here: TOGAF™ Certification

- Certification System
 - » [Enter](#)
 - » [Help](#)
- TOGAF Certification
 - » [Certification Register](#)
 - » [Register Search](#)
- Certification Documents

» [Welcome](#)

News

TOGAF

TOGAF (UK). Re
Try som
examina

Connecting to the Secure Site (1)

TOGAF Certification

- » [Certification Register](#)
- » [Register Search](#)

Certification Documents

- » [Getting Started](#)
- » [The Guide to TOGAF Certification](#)
- » [TOGAF certification policy \[PDF\]](#)
- » [TOGAF Certification Agreement](#)
- » [Fee Schedule](#)
- » [Frequently Asked Questions](#)
- » [Product Standards](#)

Enter the TOGAF Web Certification System

The Certification Authority provides a web based certification system for TOGAF™ Certification through which products, services and individuals can be submitted for certification. This is the initial entry point.

Prior to entering the Web Certification system you are recommended to browse the following:

- [The Web Certification Guides and Certification Documents.](#)
- [The Guide to TOGAF Certification](#)
- [Help for New users](#)

The next step is to select "*Proceed to Secure Web Site*" below to switch to the secure web server.

[\[Proceed to Secure Web Site\]](#)

[Send this page to a colleague](#) | [Legal Notices & Terms of Use](#) | [Privacy Statement](#) | [Top of Page](#) 

Copyright © 1995-2006. The Open Group. All Rights Reserved.

Connecting to the SSL server



TOGAF™ Certification

You are here: TOGAF™ Certification

Connected to SSL
Server but NOT
LOGGED IN

- » [Login \[help\]](#)
- » [New user](#)
- » [New Company Account](#)
(requires a valid user account)
- » [Forgotten Password?](#)
- » [Help](#)

TOGAF Certification

- » [Certification Register](#)
- » [Register Search](#)

Certification

Welcome to the TOGAF Certification web site

News



TOGAF Certified by Examination is now available in selected locations (San Francisco, USA and Reading UK). Read [about the Examination](#), including what it comprises, where to take it and plans for further rollout. Try some [demonstration questions](#). The [Guide](#) has also been updated to include the process for taking the examination.

TOGAF Certification is for both individuals and organizations. Individuals can become certified by demonstrating their knowledge of TOGAF either by attending a training course or passing an examination test. Organizations can have their products (TOGAF Tools or Training Courses), and services certified. For more information see the [TOGAF Product Standards](#).

Login

You are here: TOGAF™ Certification

Connected to SSL
Server but NOT
LOGGED IN

Welcome to the TOGAF Certification web site

News

» Login

» New u

» New C

Account

(requires

account

» Forgot

» Help

TOGAF

» Certifi

» Regist

Certifica

Documents

Prompt

Enter username and password for "The Open Group" at https://www.opengroup.org

User Name:

Password:

Use Password Manager to remember this password.

Cancel OK

to them during that process:

Logged in – Company Contact



Home



Logged in via SSL
as brer.fox

- » [Help](#)
- » [Log out?](#)

TOGAF Certification

- » [Certification Register](#)
- » [Register Search](#)

Certification

Documents

- » [Getting Started](#)
- » [The Guide to TOGAF Certification](#)
- » [TOGAF certification policy \[PDF\]](#)
- » [TOGAF Certification Agreement](#)
- » [Fee Schedule](#)

Welcome Brer Fox from Uncle Remus.

Company Registration Account

At present, you have 3 registrations fully certified for the certification program and 38 other registrations entered in the system.

Visit your [Home Page](#) to commence new registrations or check on the status of any registrations that are in progress

Quick Links

- [Start a New Registration](#)
- [Re-brand an existing product](#)
- [Go to your Renewals Summary](#)
- [Go to your Home Page](#)

If you are a new user please read the [Navigation Tips and Help](#) web page which gives tips on the conventions for use and navigation within this system.

[Send this page to a colleague](#) | [Legal Notices & Terms of Use](#) | [Privacy Statement](#) | [Top of Page](#)

Logged in - Individual



Home



Logged in via SSL
as a.josey

- » [Help](#)
- » [Log out?](#)

TOGAF Certification

- » [Certification Register](#)
- » [Register Search](#)

Certification Documents

- » [Getting Started](#)
- » [The Guide to TOGAF Certification](#)
- » [TOGAF certification policy \[PDF\]](#)
- » [TOGAF Certification Agreement](#)
- » [Fee Schedule](#)
- » [Frequently Asked](#)

Welcome Andrew Josey from The Open Group.

Company Registration Account

You are not a designated contact for a registered company within this web certification system, so your access is restricted to registering yourself as TOGAF Certified (see below). If you need to register Professional Services, Training Courses or Tools you should proceed to [register your company details](#) before you can register for further product standards on this site.

Individual TOGAF Certified Registration Account

Certification for individuals is either via a prior course attendance or by sitting an examination. Visit your [Home Page](#) to register yourself to sit the exam, register prior attendance at a qualifying training course or check on the status of any registrations that are in progress.

NOTE: If you wish to register yourself via the prior course attendance route, the system will need to request confirmation from the Training Company of your course attendance and satisfactory completion. By registering you are hereby implicitly giving the trainer permission to disclose this information.


If you are a new user please read the [Navigation Tips and Help](#) web page which gives tips on the conventions for use and navigation within this system.

Navigation via Logos

- ❑ The large “O” Logo (the home logo) takes you to your home page where a summary of all product registrations are given
- ❑ The small *Next* Logo takes you to the next step within a product registration

Navigation Logos



 **Logged In via SSL**
as **brer.fox**

» [Help](#)

» [Log out?](#)

TOGAF Certification

- ❑ The large Home Logo takes you to your home registration page which contains a summary of all your company related registration information

Select the *Next* Logo...



- ❑ Guides the applicant through the suggested next step within a product registration

The Home page

- Summarizes all activity
 - Certified Products
 - Commence a new registration
 - Re-brand a certified product
 - Renewals, renaming
 - Product submissions in progress
 - Company registration status
 - Contacts and company information

Home Page




Company Home Page for Uncle Remus

This is your home page for all certification activities. Please see the [foot of the page](#) for your company level registration status.

Approved Certification Information (listed on the Public Certification Register):

Display?

Available Options

- Start a New Registration 
- Re-brand an existing product 
- Go to your Renewals Summary
- Certified Products Update 

The Home Page cont'd

Certification Status:

This section shows the status of all your products that are in the process of being registered:

Click the **Product name** link to check on, update the product details, or delete the product.

Click the **NEXT** button to identify the next step in the registration process.

Click any date to view or process the uploaded file

Once a registration has been submitted it cannot be deleted or modified, the uploaded files can be displayed but not modified.



Displaying only TOGAF 8 pending registrations for Uncle Remus

Display ALL pending registrations including TOGAF 7?

TOGAF 8 Certified Product Standard

Product name	CID	Attendees	Registration	Instructors
(N/A)	1360	Maintain	Sent	Maintain
	NEXT		Ack.	
			Signed	

The Home Page cont'd

TOGAF 8 Training Product Standard

Course name	CID	Conformance Statement Registration	
AJAMEX2 4.0 Submitted	959 NEXT	Uploaded 07-Dec-2005 Checked	Sent 07-Dec-2005 Ack. Signed

TOGAF 8 Professional Services Product Standard

Product name	CID	Conformance Statement Practitioners Registration		
(N/A)	310 NEXT	Uploaded 09-Jan-2004 Checked	Maintain	Sent Ack. Signed

TOGAF 8 Tool Support Product Standard

Product name	CID	Conformance Statement Registration	
MY Metis 3.2.3	302 NEXT	Uploaded 05-Jan-2004 Checked	Sent Ack. Signed

Registering a New Product/Service/Individual

- Your capabilities for registration depend on
 - Who you are
 - Individual versus company accepted into the program
 - The type of TOGAF Commercial License
 - V7 versus V8
 - Whether your organization has a certified TOGAF Training product
 - If you are then you have the ability to register candidates for TOGAF Certified

To Continue...

- ❑ Select the relevant primer presentation for the appropriate class of TOGAF Certification